



**WELCOME TO THE
FLORIDA FOOD POLICY COUNCIL'S**

2020 ANNUAL MEMBERSHIP MEETING

NOVEMBER 7TH, 10AM-1PM

SCHEDULE

10:00-10:45	INTRODUCTION TO THE BOARD
10:45-11:25	CURRENT AND ONGOING PROJECTS
11:25-11:35	BREAK
11:35-12:05	BREAKOUT SESSIONS
12:05-12:20	FLFPC 2021 OUTLOOK, UPDATES AND GOALS
12:20-12:30	CLOSING STATEMENTS
12:30-1:00	NETWORKING

MEET THE BOARD



ERICA HALL
INCOMING CHAIR



RACHEL SHAPIRO
VICE CHAIR



ANTHONY OLIVIERI
DEVELOPMENT
COMMITTEE CHAIR



DELL DECHANT
POLICY
COMMITTEE CHAIR



TOM PELLIZZETTI
INCOMING TREASURER



RICK HAWKINS
TREASURER



CHRIS JOHNS
SECRETARY



MARTHA LANG
NORTH FLORIDA
LIAISON



JESSE HASKINS
SOUTH FLORIDA
LIAISON

MEET THE TEAM



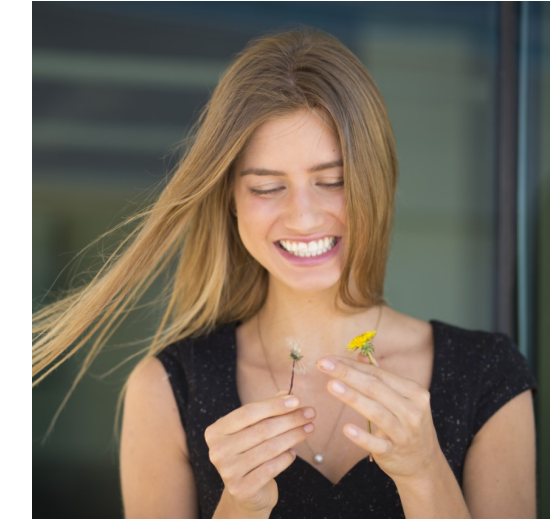
KYNDRA LOVE
OPERATIONS AND
COMMUNICATIONS MANAGER



SARAH BRUNNIG
HEAD OF CURRICULUM
DEVELOPMENT



CORTNEY SZAFRAN
RESEARCH
ASSISTANT



GABBY TEIXEIRA
RESEARCH
ASSISTANT



ARTHA JONASSAINT
ADMINISTRATIVE
INTERN



RACHEL RAM
NEW YORK
CORRESPONDENT



CANDACE SPENCER
WASHINGTON D.C.
CORRESPONDENT

CURRENT AND ONGOING PROJECTS

FLORIDA FOOD
POLICY SCAN
PROJECT

FOOD POLICY
TOOLKIT

FLORIDA FOOD
CITIZEN
CURRICULUM

FLORIDA FOOD
FORUM



FLORIDA FOOD POLICY SCAN PROJECT



Florida Food Policy Scan

AN ANALYSIS OF LAND USE POLICIES FROM SIX FLORIDA
COUNTIES FOR FOOD ACCESS, SECURITY AND FOOD
RECOVERY

Florida Food Policy Council Regions, 2018



Table 1: Florida Jurisdictions Covered in the Policy Scan

Counties	Municipalities	
Bay	Coconut Creek	Miramar
Broward	Dania Beach	Oakland Park
Duval	Fort Lauderdale	Orlando
Hillsborough	Hollywood	Pembroke Pines
Liberty	Jacksonville	Plantation
Orange	Lauderdale Lakes	Pompano Beach
	Lauderdale-By-The-Sea	Tampa
	Lauderhill	Wilton Manors

BACKGROUND

RESEARCH QUESTIONS

1. What is the distribution of food policies by policy scan category¹?
2. What is the distribution of food policies across land use planning document types?
3. What are the top food system strategies these policies address?
4. Which counties show the most promise for addressing food system failures, such as hunger?
5. What are some of the most robust, innovative policies found in the study?
6. What are the policy gaps that show the most promise for improving?

RESULTS

Table 7: Distribution of Policies by County and Policy Document Type

County	Comp Plans	LDRs	Master Community Plans				Total by County Unit
			Strategic, Master, Action, and Vision Plans	Green Plans	CRA	Other	
Bay	3	0	0	0	0	0	3
Broward	36	29	11	4	5	1	86
Duval	2	6	0	0	0	3	11
Hillsborough	7	14	0	0	0	0	21
Liberty	4	1	0	0	0	0	5
Orange	8	9.5	1	5	0	3	26.5
Total by Policy Type	60	59.5	12	9	5	7	152.5

LAND USE PLANNING POLICY DOCUMENTS

Table 2: Land Use Planning Policy Documents and Food System Policy Change

Land Use Planning Policy Documents	Enforceable by Law	Policy Change Considerations	Food System Policy Significance
Comprehensive Plans (Comp Plan)	YES, the most	Comp Plans are difficult and expensive, but have a wide, long-term impact for policy change. Requires robust and wide-reaching public input and staff expertise. Often consultants are required for technical analysis to justify the policy needs.	A food policy in this plan can last for decades and be used to create LDRs, Master Plans and CRA Plans. Food policies could exist in each element, or be created as a standalone element.
Land Development Regulations (LDRs)	YES, especially if justified in the Comp Plan	LDRs are quick to create and change, but should be linked to a justification in the comprehensive plan.	They can be used to quickly implement a food project such as a farmers market, as long as it is rationally related to the comprehensive plan vision, intent or a specific policy.
Community Redevelopment Agency (CRA) plans	YES, if supported by the Comp Plan and LDRs	CRA plans have direct oversight and enforcement with the CRA board and the city elected representatives. They are limited to the targeted CRA-designated area and must be in compliance with the city comprehensive plan and LDRs. However, they can create non-conflicting policies for the target area.	Since all CRA projects must be tied to funding, food policies in these plans have the most promise for materializing. Direct political oversight ensures approved projects. Since food systems failures such as hunger often affect low-socioeconomic populations, CRA policies are most likely to directly benefit populations of need.
Community Master Plans (e.g. Green, Strategic, Economic, and Vision Plans)	Maybe, if directed by the Comp Plan	These plans might be used to inform the need for amending the comprehensive plan, or creating new LDRs. They are often used as standalone plans for a narrow topic and area.	This is a gateway policy tool. These plans could be used to inspire community enthusiasm for food system change. They could also be used to identify the need to create new, enforceable policies that address food system failures.



FLORIDA FOOD CITIZEN CURRICULUM

4-PART CURRICULUM HELPING FLORIDIANS BECOME FOOD CITIZENS

LESSON 1:
WHAT IS FOOD POLICY? WHY DOES
FOOD POLICY MATTER?

LESSON 2:
WHAT DOES FOOD POLICY LOOK LIKE
IN OUR CURRENT FOOD SYSTEM?

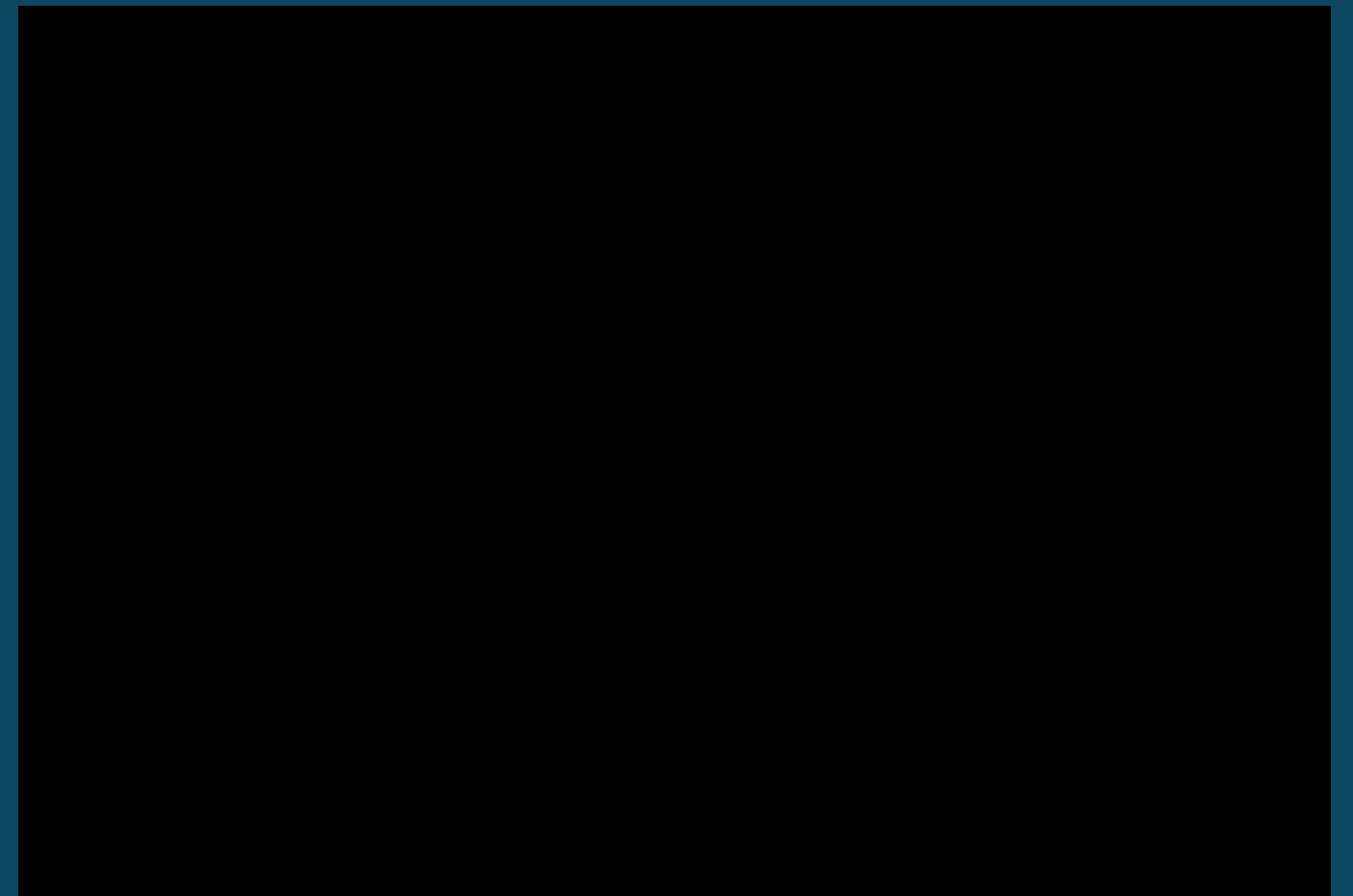
LESSON 3:
WHAT DOES A HEALTHY FOOD SYSTEM
LOOK LIKE?

LESSON 4:
HOW TO BE AN ACTIVE FOOD CITIZEN



FLORIDA FOOD CITIZEN CURRICULUM

PREVIEW





FLORIDA FOOD POLICY TOOLKIT

-
- A RESOURCE FOR INDIVIDUALS AND ORGANIZATIONS WHO ARE INTERESTED IN AFFECTING CHANGE IN FOOD SYSTEMS IN FLORIDA
 - INTENDED AS AN INTRODUCTORY GUIDE TO THE LAWS AND REGULATIONS (AND THE AGENCIES THAT ADMINISTER THEM) THAT AFFECT FOOD SYSTEMS IN FLORIDA
 - A BASIC REFERENCE STARTING POINT AND A GUIDE POST TO GIVE FOUNDATIONAL INFORMATION ABOUT FOOD POLICY IN FLORIDA
 - POINTS FLORIDIANS IN THE RIGHT DIRECTION TO FIND MORE INFORMATION ABOUT A PARTICULAR POLICY
-

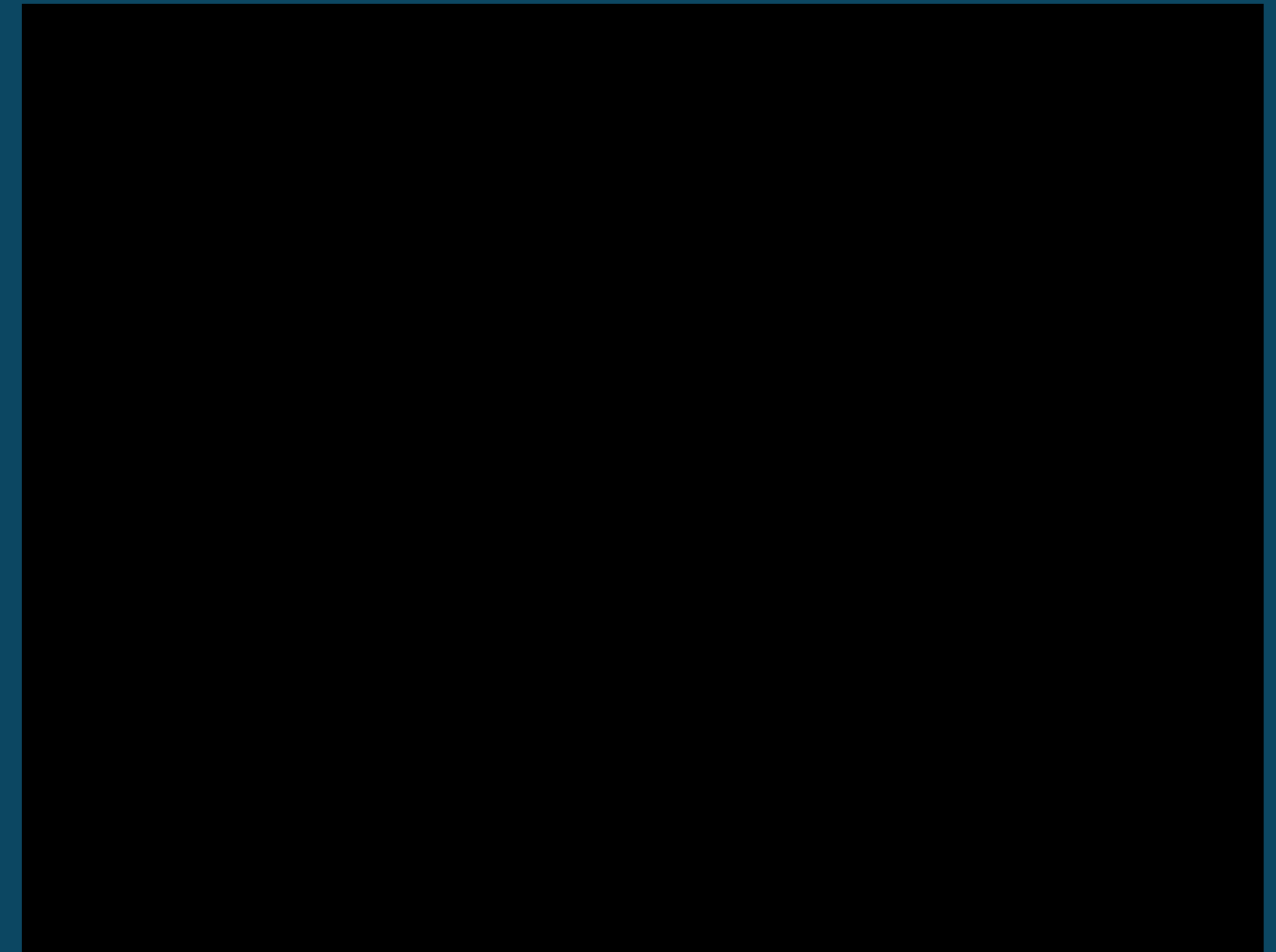
STATUS UPDATE

SECTION 1

PREVIEW

THE GENERAL LEGAL SETTING IN FLORIDA - STATUS: DRAFT REVISIONS

- EXPLAINS THE RELATIONSHIP BETWEEN FEDERAL, STATE, AND LOCAL LAWS
- EXPLAINS THE RELATIONSHIP BETWEEN LAWS AND REGULATIONS AND HOW THEY ARE MADE IN FLORIDA
- IDENTIFIES THE STATE AGENCIES THAT ADMINISTER LAWS AND REGULATIONS THAT AFFECT OUR FOOD SYSTEMS



STATUS UPDATE

SECTION 2

FOOD SYSTEM INFRASTRUCTURE IN FLORIDA – STATUS: COMPILING INFORMATION, ANALYZING, AND DRAFTING

- A REPOSITORY OF INFORMATION REGARDING EACH COMPONENT OF THE FOOD SYSTEM ACROSS FLORIDA

6 SUB-SECTIONS:

- FOOD SYSTEM ASSESSMENTS
- PRODUCTION
- PROCESSING
- AGGREGATION AND DISTRIBUTION
- RETAIL
- FOOD WASTE MANAGEMENT

EACH SUBSECTION WILL PROVIDE A DESCRIPTION OF what that component is, how it fits into the food system conceptual frame work, and will provide state-specific resources and references

Example: Community Food system assessments



FLORIDA FOOD FORUMS (& DIALOGUES)

FORUM FEATURES

THE FLORIDA FOOD FORUM IS AN ONLINE, INTERACTIVE SERIES THAT ENABLES FLORIDA FOOD SYSTEM EXPERTS, COMMUNITY ADVOCATES, AND RESIDENTS TO DISCUSS EMERGING ISSUES THAT IMPACT FOOD.

IT IS CURRENTLY THE ONLY TYPE OF WEBINAR IN THE STATE OF FLORIDA THAT TOUCHES A WIDE-RANGE OF FOOD-RELATED TOPICS SUCH AS FOOD JUSTICE, TECHNOLOGY AND AGRICULTURE, FOOD ACCESS, URBAN PLANNING AND FOOD POLICY.

FORUM TOPICS AND FEATURES

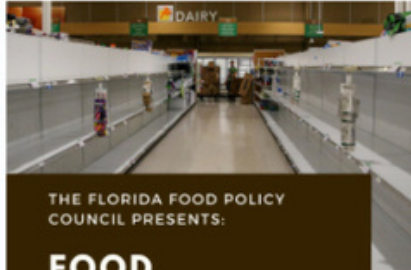
MONTHLY FORUMS ARE 1 HOUR-LONG, INTERACTIVE WEBINARS

SPECIAL SESSIONS OF THE FORUM ARE PRODUCED EVERY FEW MONTHS TO BRING FOCUS TO PRESSING OR TRENDING TOPICS



THE FLORIDA FOOD POLICY COUNCIL PRESENTS:
COMMUNITY ORGANIZING AND THE FOOD SYSTEM

LIVE WEBINAR ON MICROSOFT TEAMS
Friday, September 25 from 12-1pm



THE FLORIDA FOOD POLICY COUNCIL PRESENTS:
FOOD INSECURITY AND FOOD JUSTICE

LIVE WEBINAR ON MICROSOFT TEAMS
Friday, July 17 from 12-1pm



THE FLORIDA FOOD POLICY COUNCIL PRESENTS:
TECHNOLOGY IN THE FOOD PRODUCTION SYSTEM

LIVE WEBINAR ON MICROSOFT TEAMS
Friday, June 26 from 12-1pm



THE FLORIDA FOOD POLICY COUNCIL PRESENTS:
WOMEN IN THE FOOD SYSTEM

LIVE WEBINAR ON MICROSOFT TEAMS
Friday, March 27 from 12-1pm



THE FLORIDA FOOD POLICY COUNCIL PRESENTS:
MURKY WATERS: WATER, FOOD AND SOCIETY

LIVE WEBINAR ON MICROSOFT TEAMS
Friday, April 24 from 12-1pm



THE FLORIDA FOOD POLICY COUNCIL PRESENTS:
COVID-19 IMPACTS ON THE FLORIDA FOOD SYSTEM

LIVE WEBINAR ON MICROSOFT TEAMS
Friday, May 15 from 12-1pm



THE FLORIDA FOOD POLICY COUNCIL PRESENTS:
EQUITY IN THE FOOD SYSTEM

LIVE WEBINAR ON MICROSOFT TEAMS
Friday, February 28 from 12-1pm



THE FLORIDA FOOD POLICY COUNCIL PRESENTS:
FOOD POLITICS: THE ROLE OF POLICY IN THE FOOD SYSTEM

LIVE WEBINAR ON MICROSOFT TEAMS
Friday, January 31 from 12-1pm



THE FLORIDA FOOD POLICY COUNCIL PRESENTS:
FARM TO SCHOOL

LIVE WEBINAR ON MICROSOFT TEAMS
Friday, October 25 from 12-1pm

2021 OUTLOOK, UPDATES, AND GOALS

NEW
MUNICIPAL
MEMBERSHIP
STRUCTURE

FLORIDA FOOD
FORUM
SPONSORSHIP
OPPORTUNITY

QUARTERLY
MEMBER
WORKSHOPS
AND EVENTS

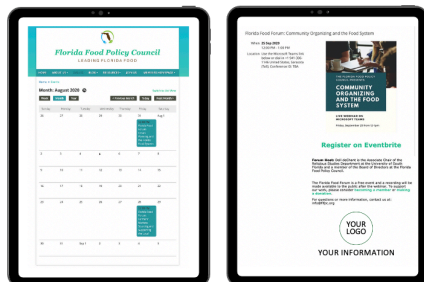
GROW WITH
US!

FLORIDA FOOD FORUM SPONSORSHIP OPPORTUNITY

SPONSOR BENEFITS

MARKETING

- Listed on FLFPC's event calendar and event registration page.



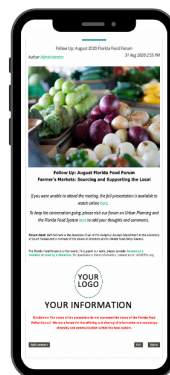
OPENING

- A brief sponsor introduction will be given at the beginning of the webinar.



FOLLOW UP

- Listed on FLFPC's "Follow Up" Forum post which is included in monthly newsletter.



SPONSOR LEVELS AND BENEFITS

SEED LEVEL

OPENING

- A brief sponsor introduction will be given at the beginning of the webinar.

FOLLOW UP

- The sponsor's logo and link will be listed on FLFPC's "Follow Up" post which is hosted on the FLFPC website and included in the monthly newsletter.

SPROUT LEVEL

OPENING

- A brief sponsor introduction will be given at the beginning of the webinar.

FOLLOW UP

- The sponsor's logo and link will be listed on FLFPC's "Follow Up" post which is hosted on the FLFPC website and included in the monthly newsletter.

MARKETING

- The sponsor's information will be listed on multiple social media platforms and FLFPC's website.

CROP LEVEL

OPENING

- A brief sponsor introduction will be given at the beginning of the webinar.

FOLLOW UP

- The sponsor's logo and link will be listed on FLFPC's "Follow Up" post which is hosted on the FLFPC website and included in the monthly newsletter.

MARKETING

- The sponsor's information will be listed on multiple social media platforms and FLFPC's website.

SPECIAL FORUM

- A special forum will be held based on the sponsor's topic recommendation.* Only the sponsor will be named in event opening, follow up and marketing.
*Topic must align with the mission of FLFPC.

FLORIDA FOOD FORUM SPONSORSHIP OPPORTUNITY

PRICING

Sponsorship lasts 12 months!

YOUR SPONSORSHIP HELPS

- Provide a new perspective on food policy to a local, national and worldwide audience.
- Maintain our online webinar platform and website.
- Provide steady income and honorariums for staff and speakers.

Disclaimer: The Florida Food Policy Council (FLFPC) will review sponsorship donations on a case by case basis. If FLFPC determines that a sponsor's work is inconsistent with FLFPC's mission, then FLFPC may decline sponsorship.

	 SEED	 SPROUT	 CROP
Individual Sponsor	\$500	\$1000	\$1500
Non-Profit, Institution, Small Business, Sponsor	\$1000	\$2000	\$3000
Corporate Sponsor	\$3000	\$6000	\$9000

FOR MORE
INFORMATION
EMAIL:
INFO@FLFPC.ORG



CLOSING REMARKS

**THANK YOU FOR YOUR
SUPPORT!**
